



Alameda County Children's System of Care: Integrating MHSA-PEI with Major Initiatives



Presentation to the
Board of Supervisors Health Committee
January 12, 2009



Acknowledgements

Thanks to the leadership of BHCS and HCSA, Children's Services has been able to collaborate with other partner agencies to develop a much larger and effective Children's System of Care (SOC) based on a blended funding model that allows the resources of each agency to be used for the betterment of children and families.

Presentation Objectives

- A. Timeline of Key Milestones**
- B. Overview of EPSDT Expansion**
- C. Birth – Age 5 Initiative**
- D. School Health Initiative**
- E. MHSA-PEI Integration with the Children's SOC**
- F. Questions & Discussion**



Children's System of Care

Changes to the Children's SOC Programs and Budget 1996 - Present

		1995/96	2007/08
<i>Budget</i>	CBO	\$ 9,643,410	\$ 93,272,081
	County	\$ 4,015,252	\$ 11,919,906
	Total	\$ 13,658,662	\$105,191,987
<i>Programs</i>	CBO	unavailable	354
	County	10	11
	Total	10	364
<i>Providers</i>	CBO	14	73
	County	1	1
	Total	15	74
<i>Children Served</i>	CBO	1270	17,631
	County	2213	2671
	Total	3483	20,302

History of Children's SOC, 1996 - 2008

BEGINNING

MIDDLE

NOW

BHCS Children's SOC

- ▶ MH/AOD Merger
- ▶ Outpatient MH
- ▶ Children's Specialized Svcs.
- ▶ Guidance Clinic
- ▶ ACCESS Referral Network
- ▶ State SOC Grant
- ▶ Early Childhood MH Svcs.

- ▶ TMSF/EPSTD Expansion

- ▶ Willow Rock
- ▶ Guidance Clinic
- ▶ **EPSTD now funds 179 Programs**

Birth to Age Five Services

- ▶ Prop 10 Funding
- ▶ First Five/ECC Began
- ▶ State Infant Preschool MH Initiative
- ▶ ECC seeds BHCS ECCTP Program
- ▶ Harris Training

- ▶ Development of ECMH Policy Group
- ▶ Start of 0-5 EPSTD Coordinating Committee
- ▶ Childcare MH Partnership Grant

- ▶ Cal Endowment ECMH Policy Initiative
- ▶ OFCY MH Consultation & Playgroups
- ▶ Pediatric & Perinatal SART
- ▶ **Now MH Consultation in 80 preschool & childcare classrooms**

School Health Services

- ▶ Established SHS Coalition with 4 SBHCs
- ▶ Secured 1-time only foundation \$ for start-up

- ▶ SBHC/OUR KIDS receive TMSF
- ▶ Master Agreement between County/OUSD

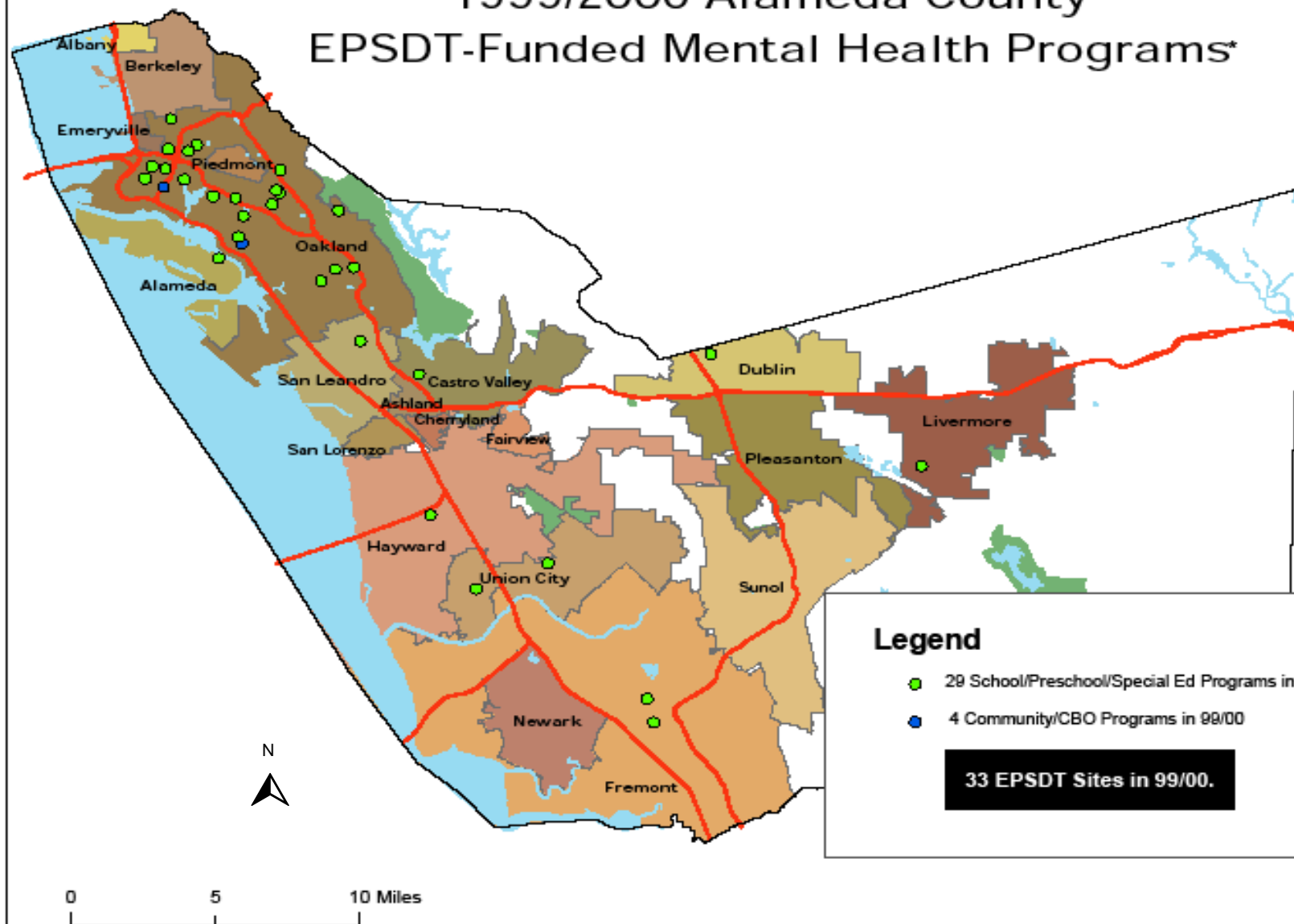
- ▶ Merged OUR KIDS/SBHC with School EPSTD Workgroup
- ▶ Launched Full Service Community School Initiative
- ▶ **Now have 30 OUR KIDS schools & 12 SBHCs**

Tobacco Master Settlement Fund (TMSF)

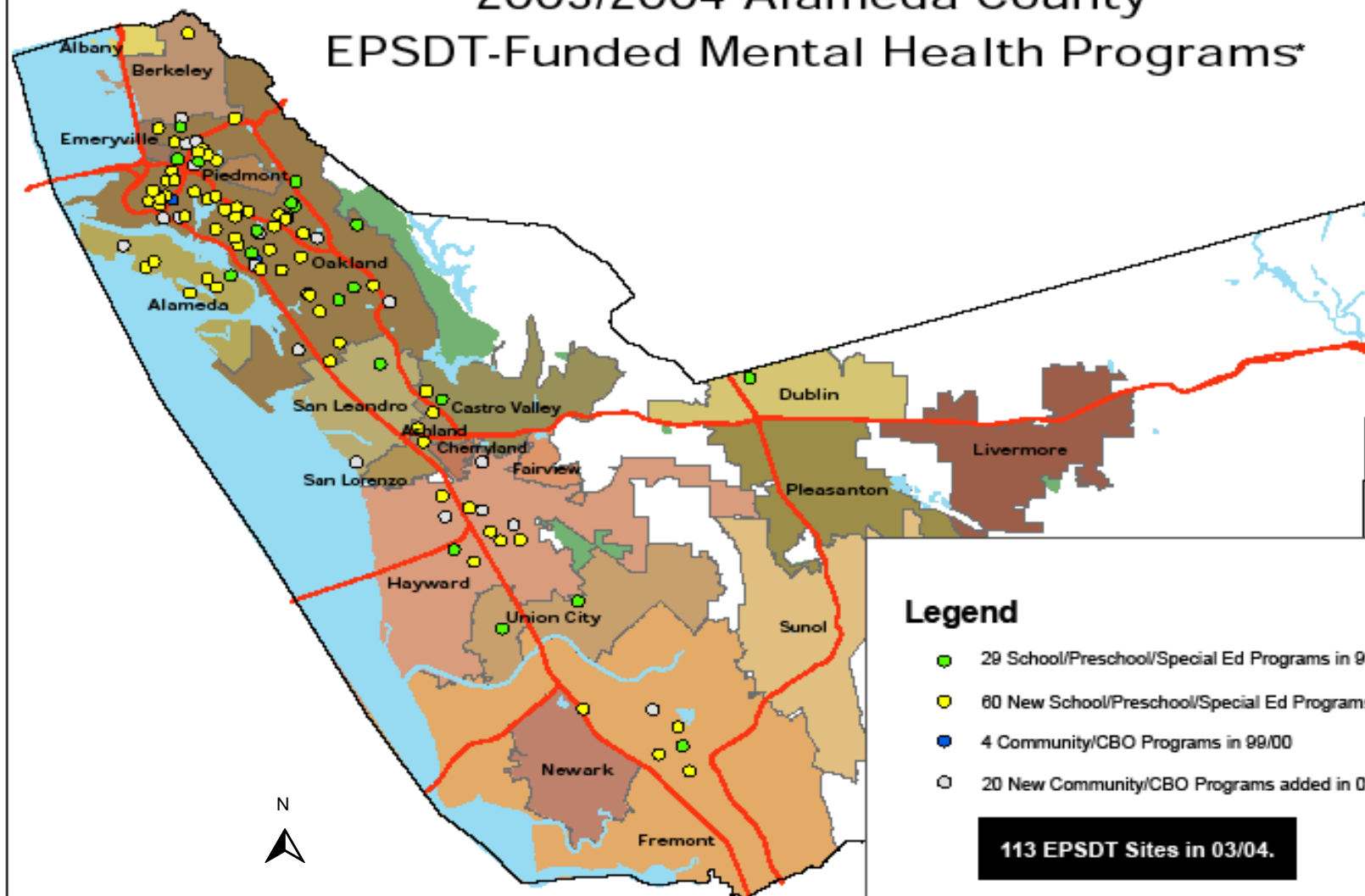
Leverages EPSDT Dollars to:

- **Broaden the safety net for children**
- **Promote collaboration amongst community providers**
- **\$2 million from TMSF used to leverage \$40 million in EPSDT Medi-Cal billable services**

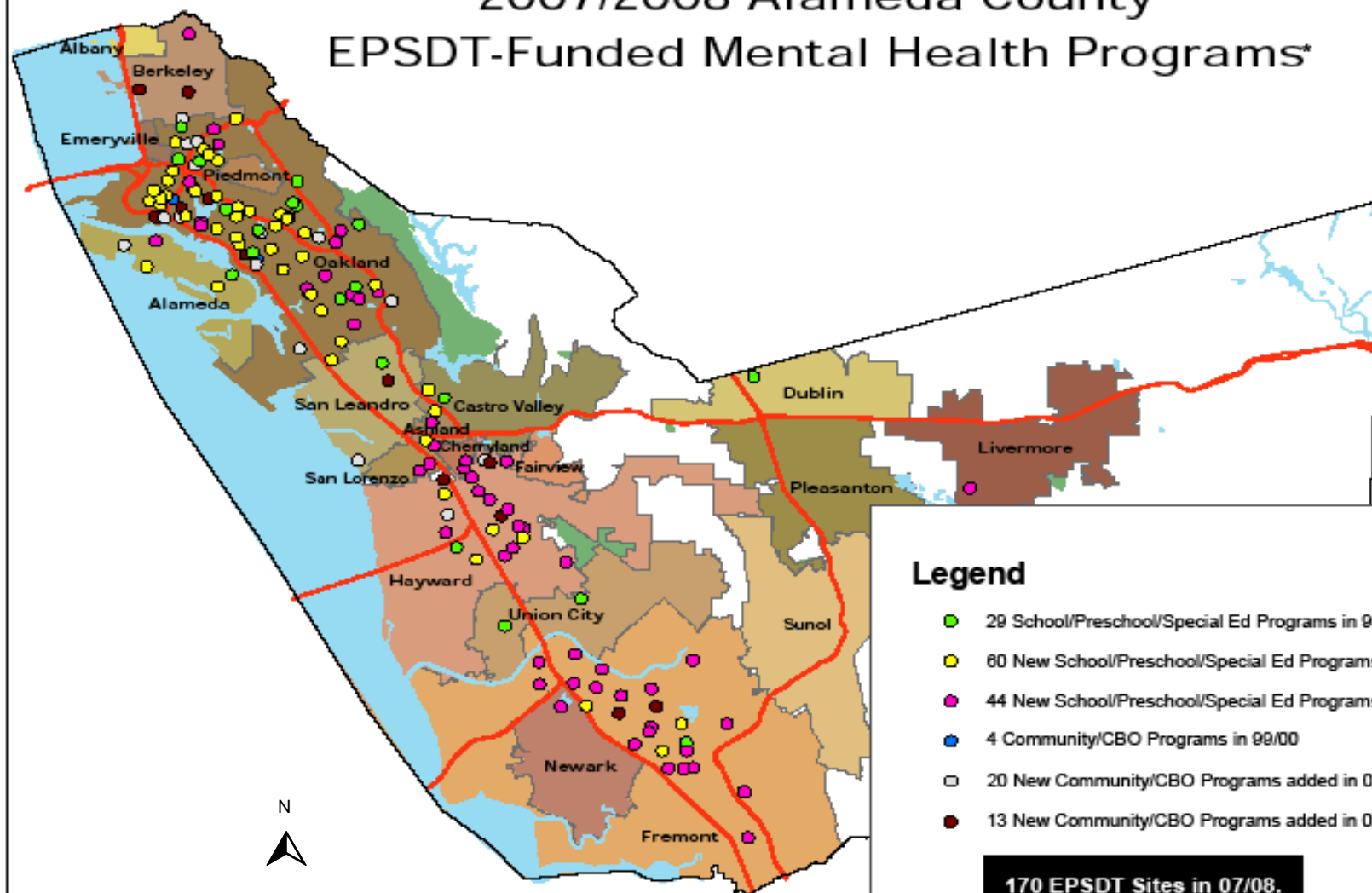
1999/2000 Alameda County EPSDT-Funded Mental Health Programs*



2003/2004 Alameda County EPSDT-Funded Mental Health Programs*



2007/2008 Alameda County EPSDT-Funded Mental Health Programs*



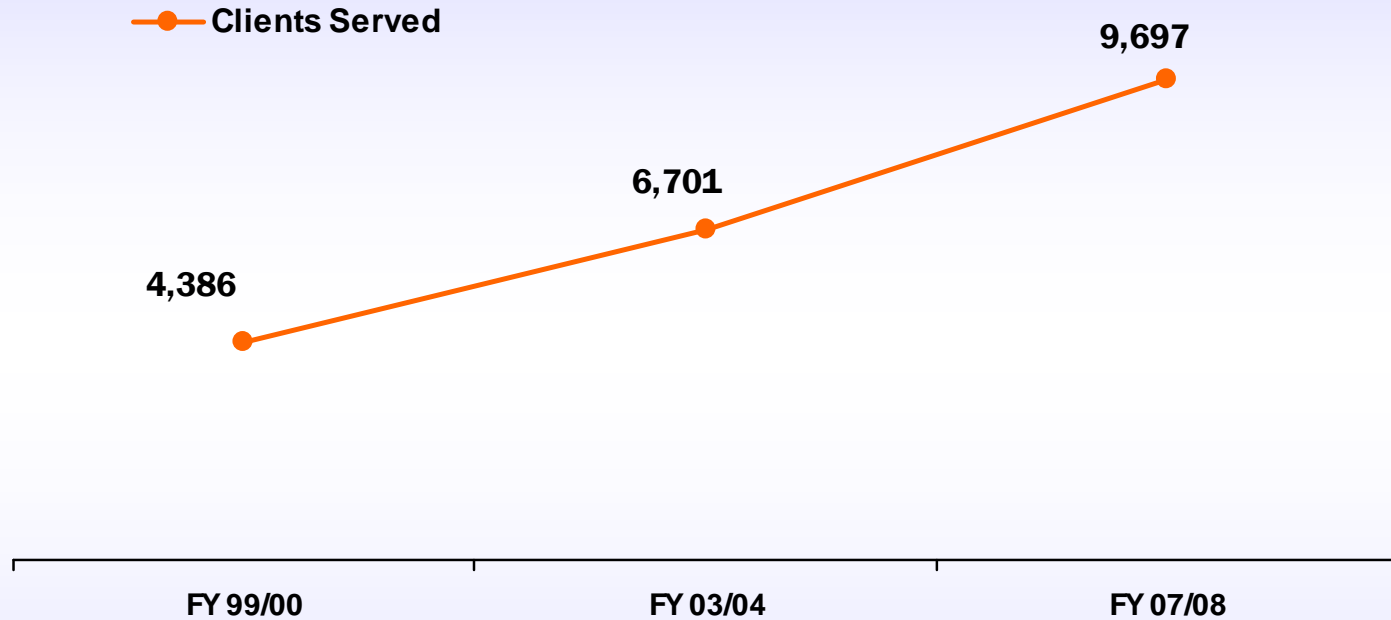
Legend

- 29 School/Preschool/Special Ed Programs in 99/00
- 60 New School/Preschool/Special Ed Programs added in 03/04
- 44 New School/Preschool/Special Ed Programs added in 07/08
- 4 Community/CBO Programs in 99/00
- 20 New Community/CBO Programs added in 03/04
- 13 New Community/CBO Programs added in 07/08

170 EPSDT Sites in 07/08.

* A number of sites closed between 99/00 and 07/08. These sites are counted as 99/00 or 03/04 sites in the legend, but shown as new sites in the map. Please note that the map does not include Level 3 or Out of County Providers.

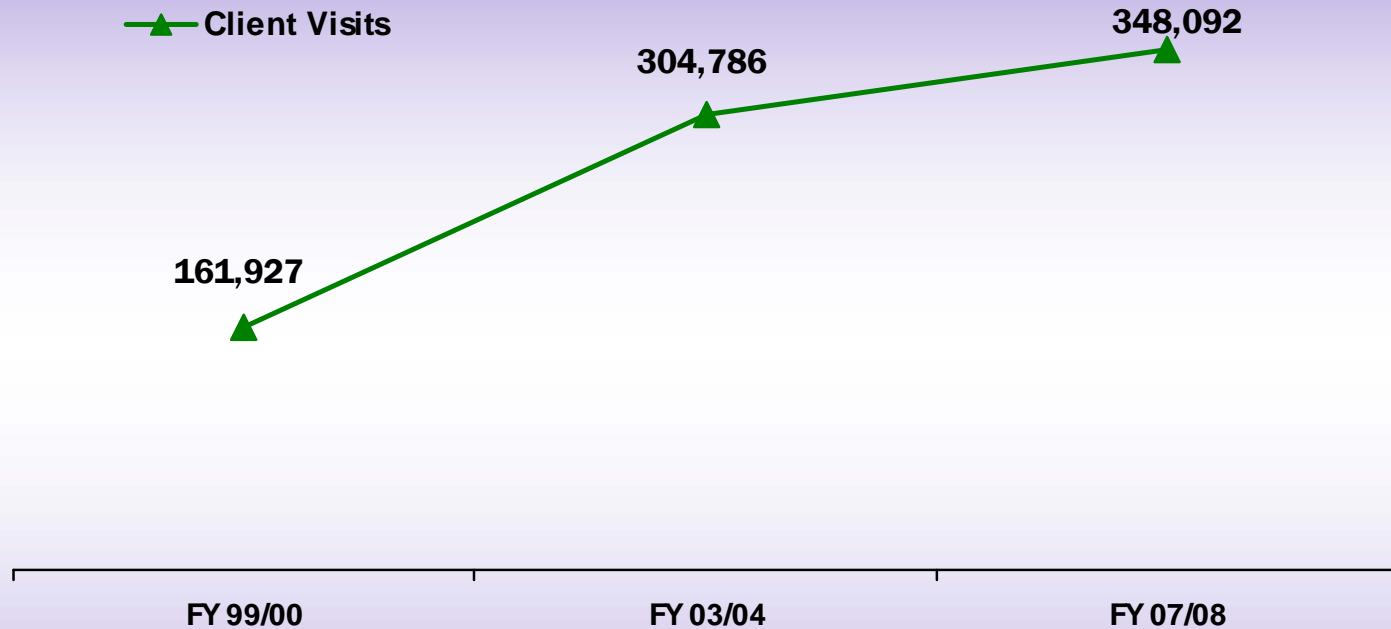
EPSDT Client Trends



Number of Clients Served

↑ 121%

EPSDT Visit Trends



Number of Client Visits

↑ 115%

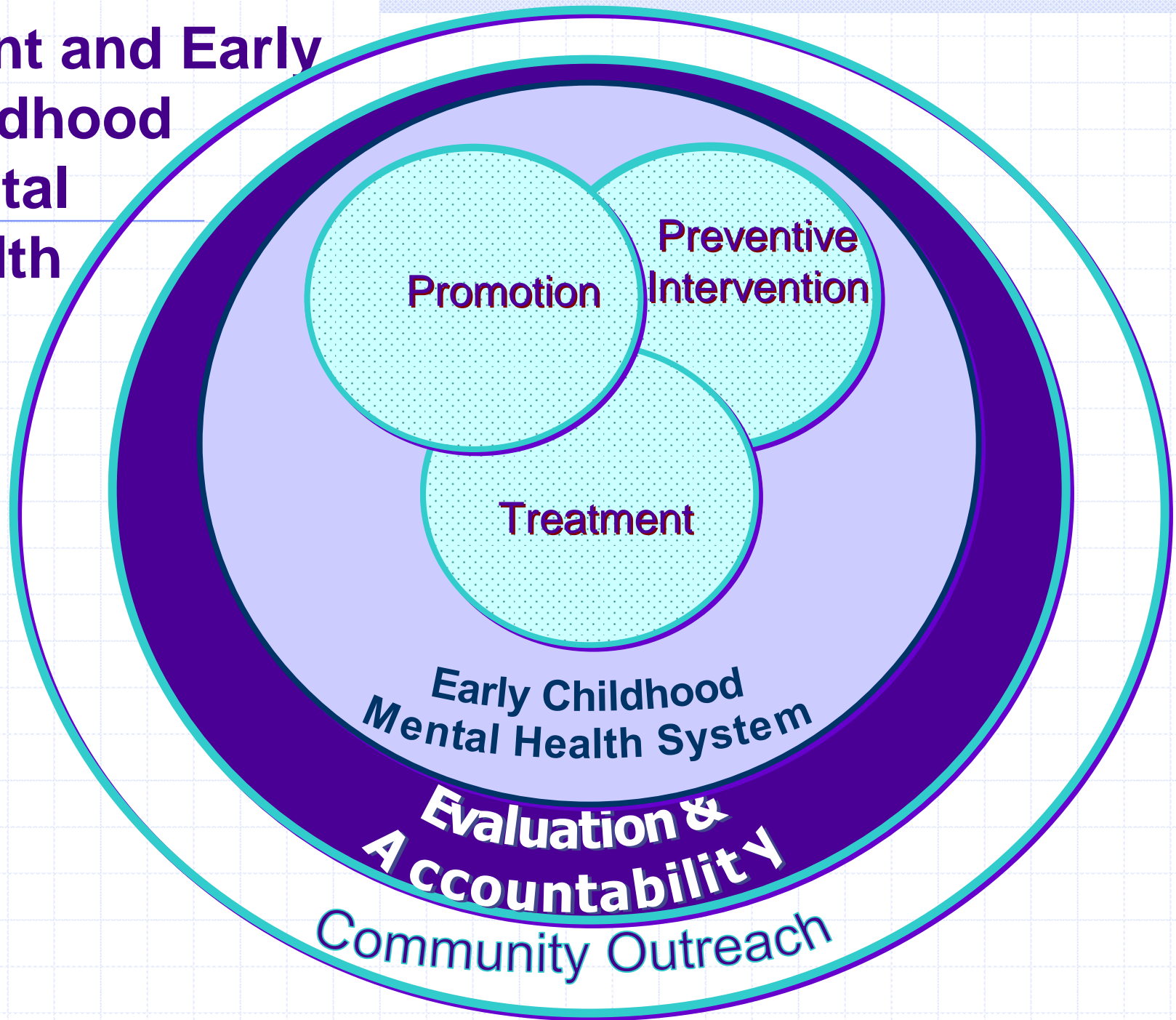
Children Served with EPSDT Expansion Funds in the 07/08 Fiscal Year

- **0-5 Programs** 975 families
- **Co-occurring Disorders** 102 children
- **Foster Care Programs** 2,828 children
- **Probation Programs** 157 youth
- **School Programs** 1,588 children
- **Transition Age Youth** 145 youth

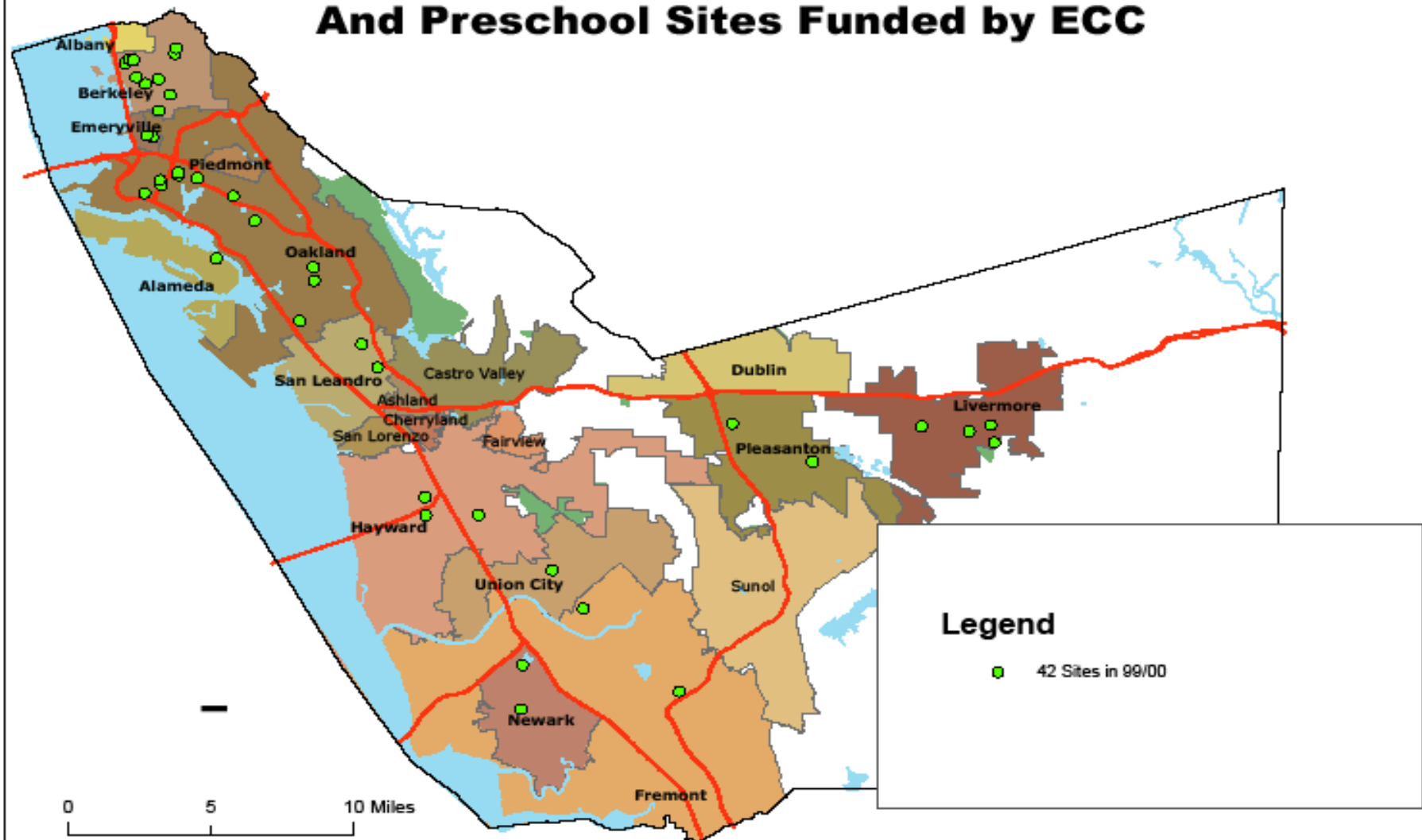


Birth to Age 5 Services

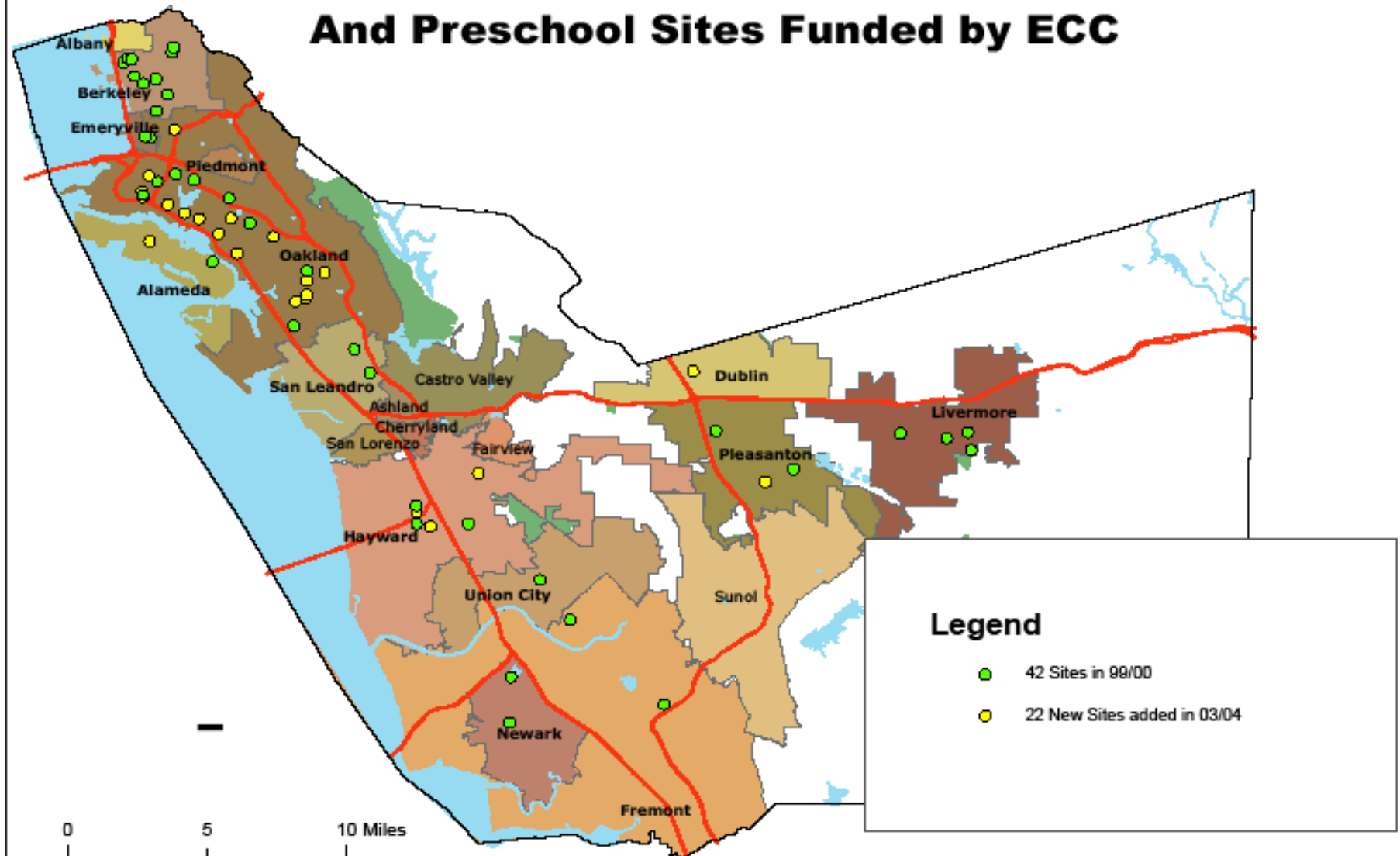
Infant and Early Childhood Mental Health



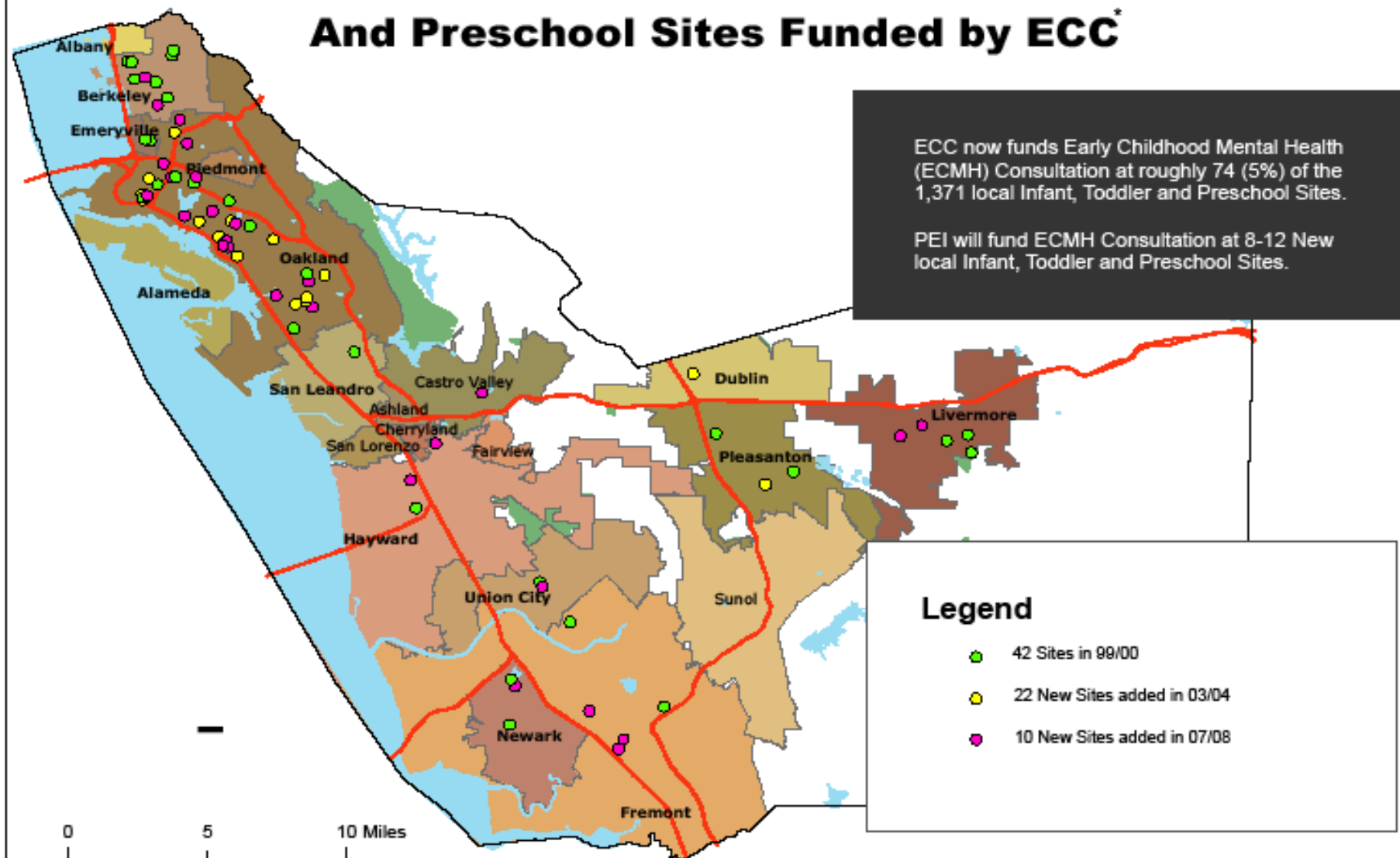
1999/2000 Alameda County Early Childhood Mental Health Infant, Toddler And Preschool Sites Funded by ECC



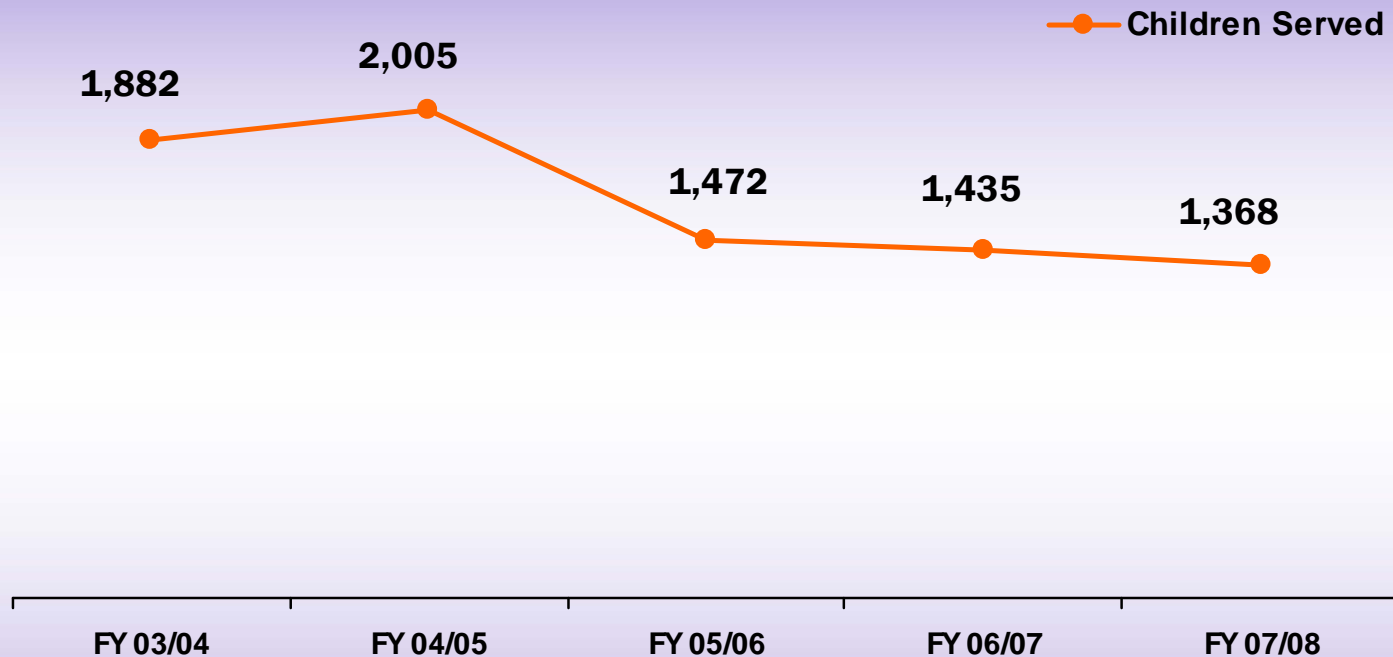
2003/2004 Alameda County Early Childhood Mental Health Infant, Toddler And Preschool Sites Funded by ECC



2007/2008 Alameda County Early Childhood Mental Health Infant, Toddler And Preschool Sites Funded by ECC*



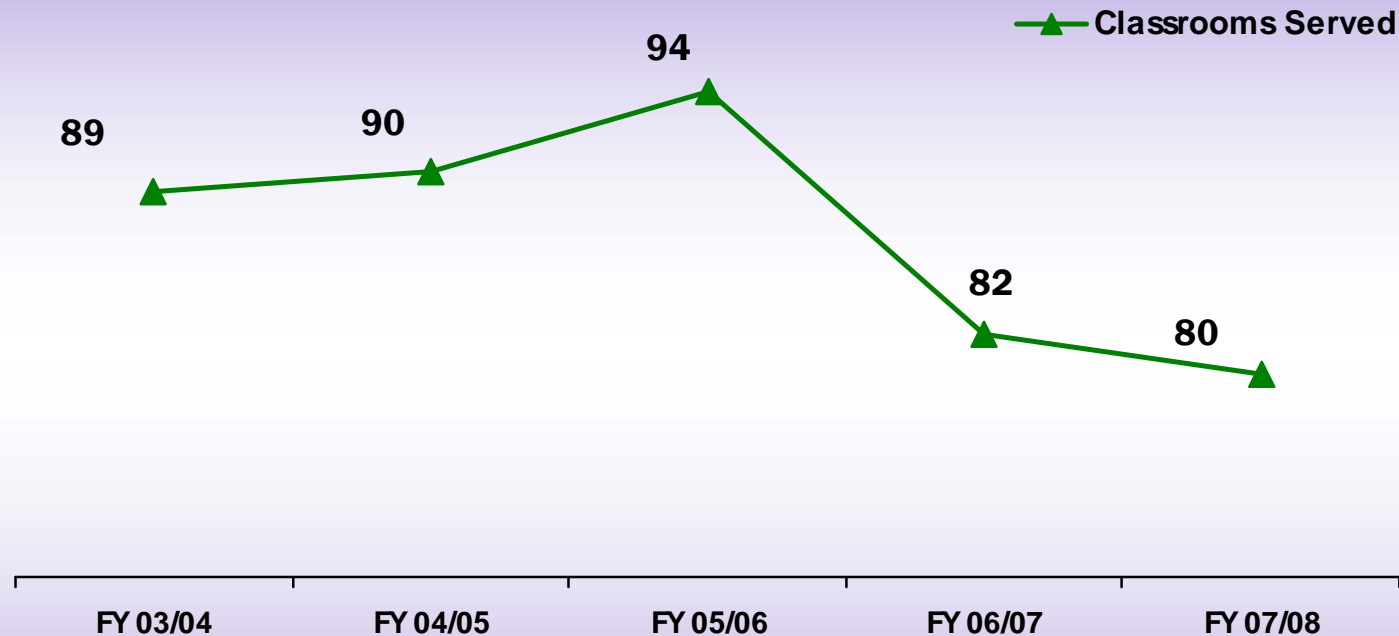
Trends in Children Served for ECC Funded Mental Health Consultation Programs



Number of Children Served

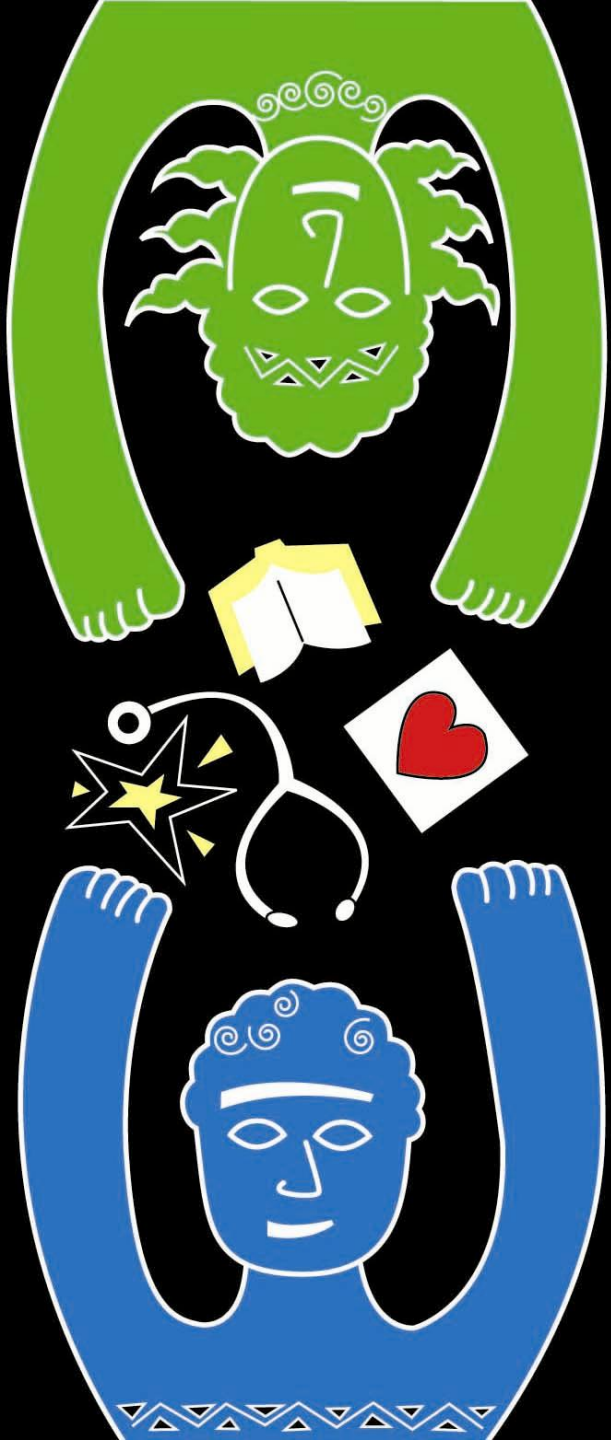
↓ 27%

Trends in Classrooms Served for ECC Funded Mental Health Consultation Programs



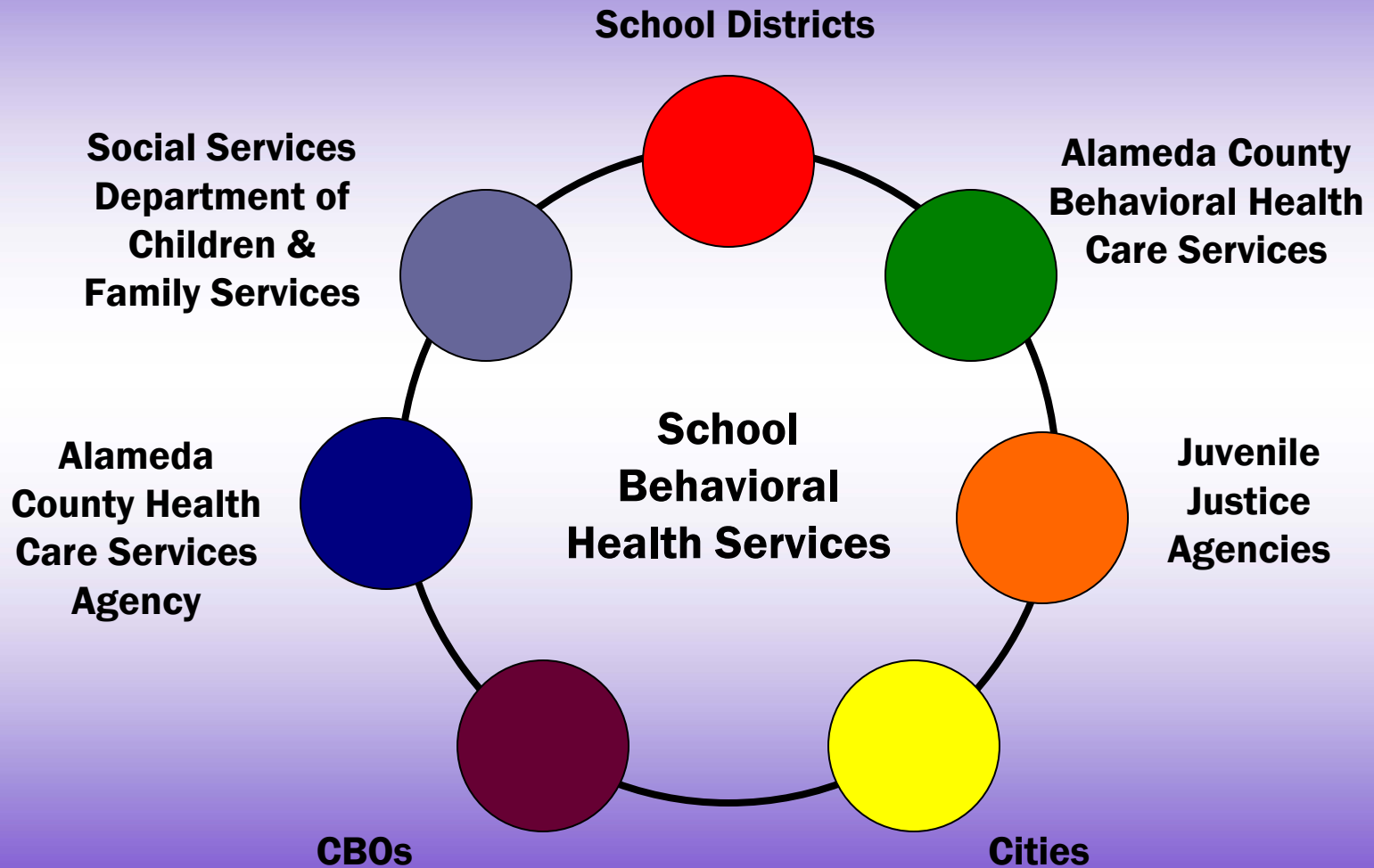
Number of Classrooms Served

↓ 10%



School Behavioral Health Services

School Behavioral Health Workgroup



14 School District Partnerships

★ Alameda City

★ Oakland

★ Alameda County

★ Piedmont

★ Berkeley

★ Pleasanton

★ Dublin

★ Newark

★ Fremont

★ New Haven

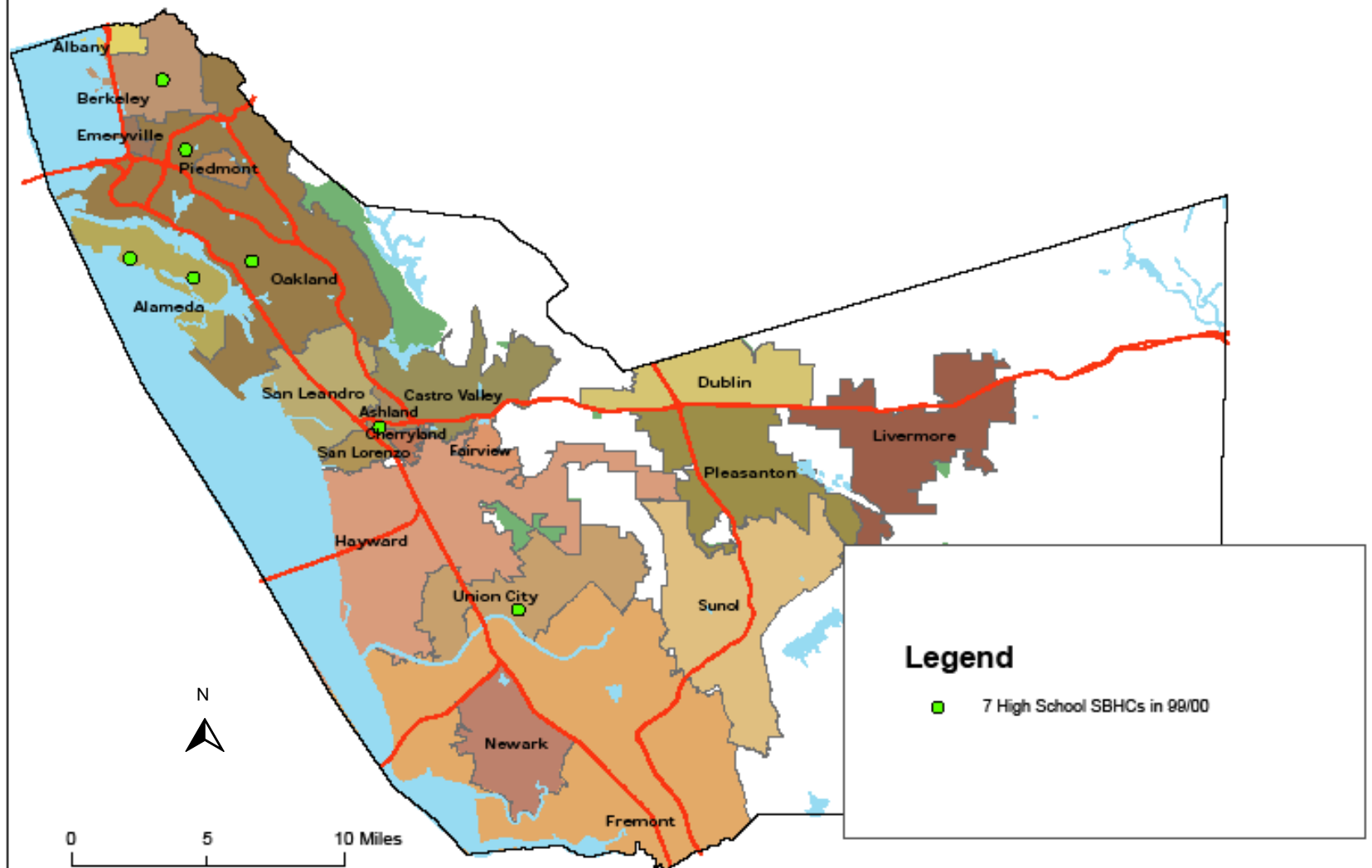
★ Hayward

★ San Leandro

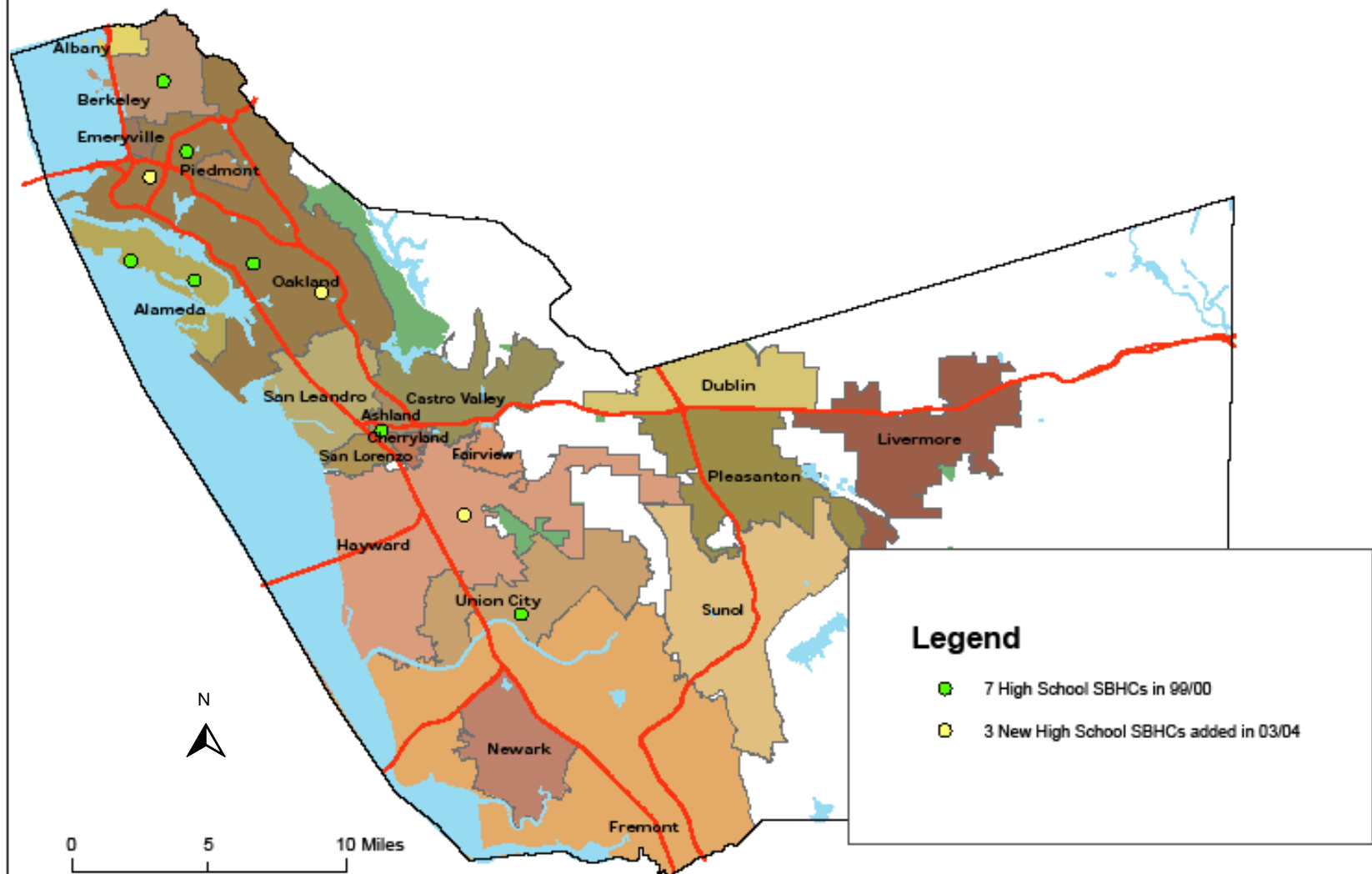
★ Livermore

★ San Lorenzo

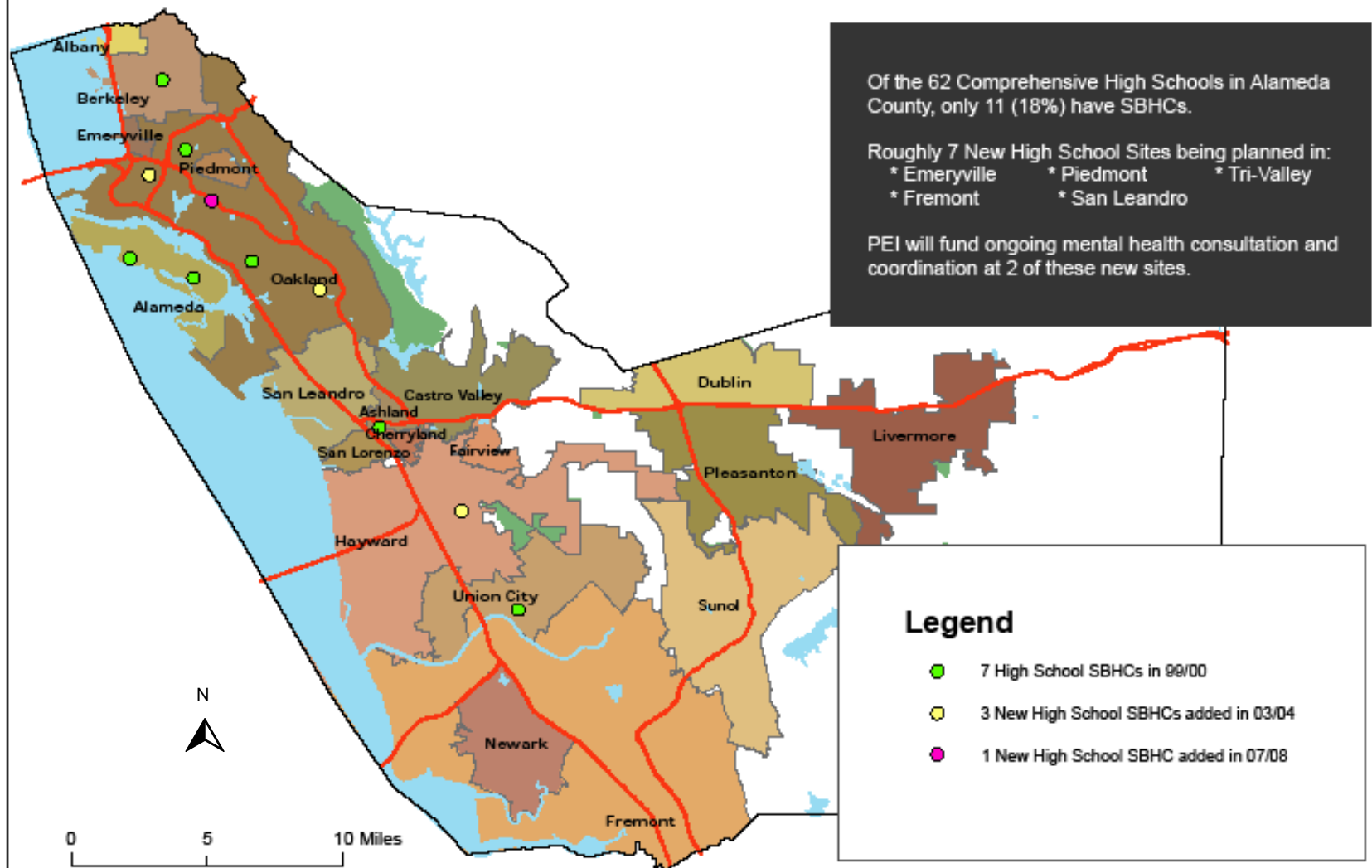
1999/2000 Alameda County High School School-Based Health Centers (SBHCs)



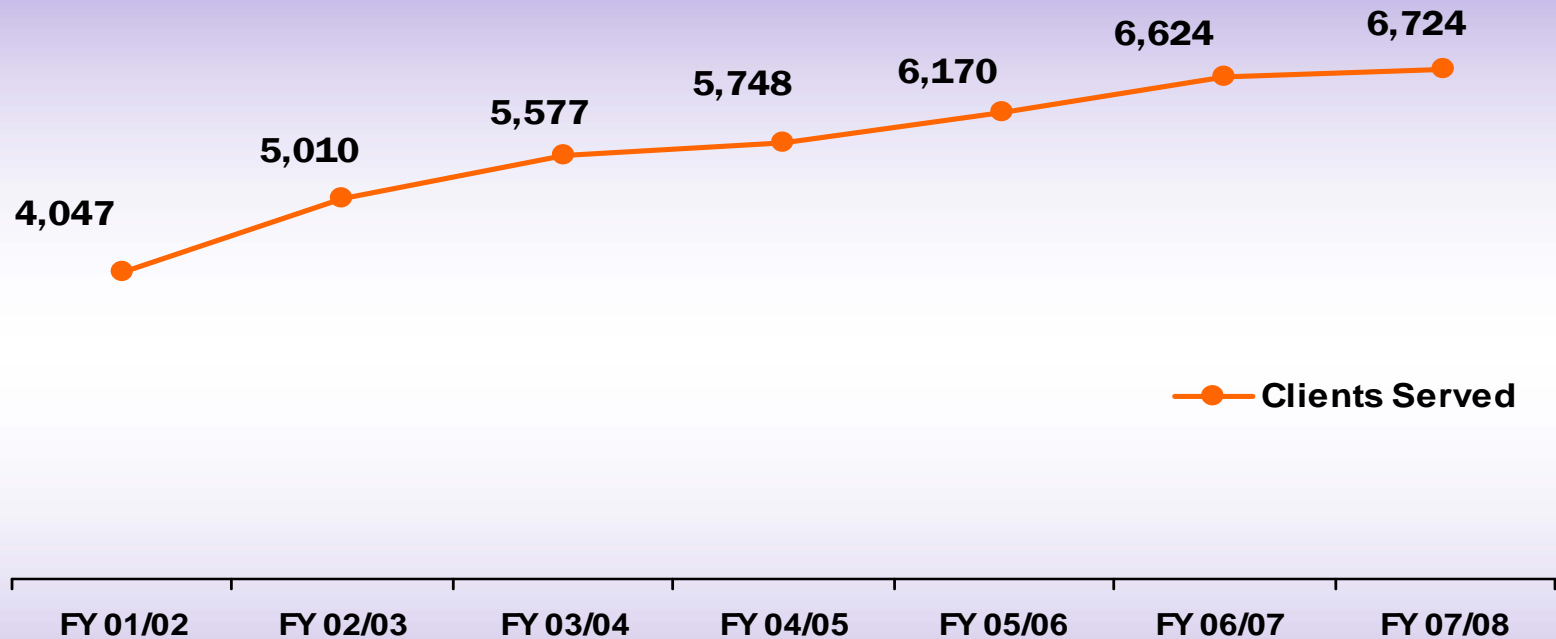
2003/2004 Alameda County High School School-Based Health Centers (SBHCs)



2007/2008 Alameda County High School School-Based Health Centers (SBHCs)



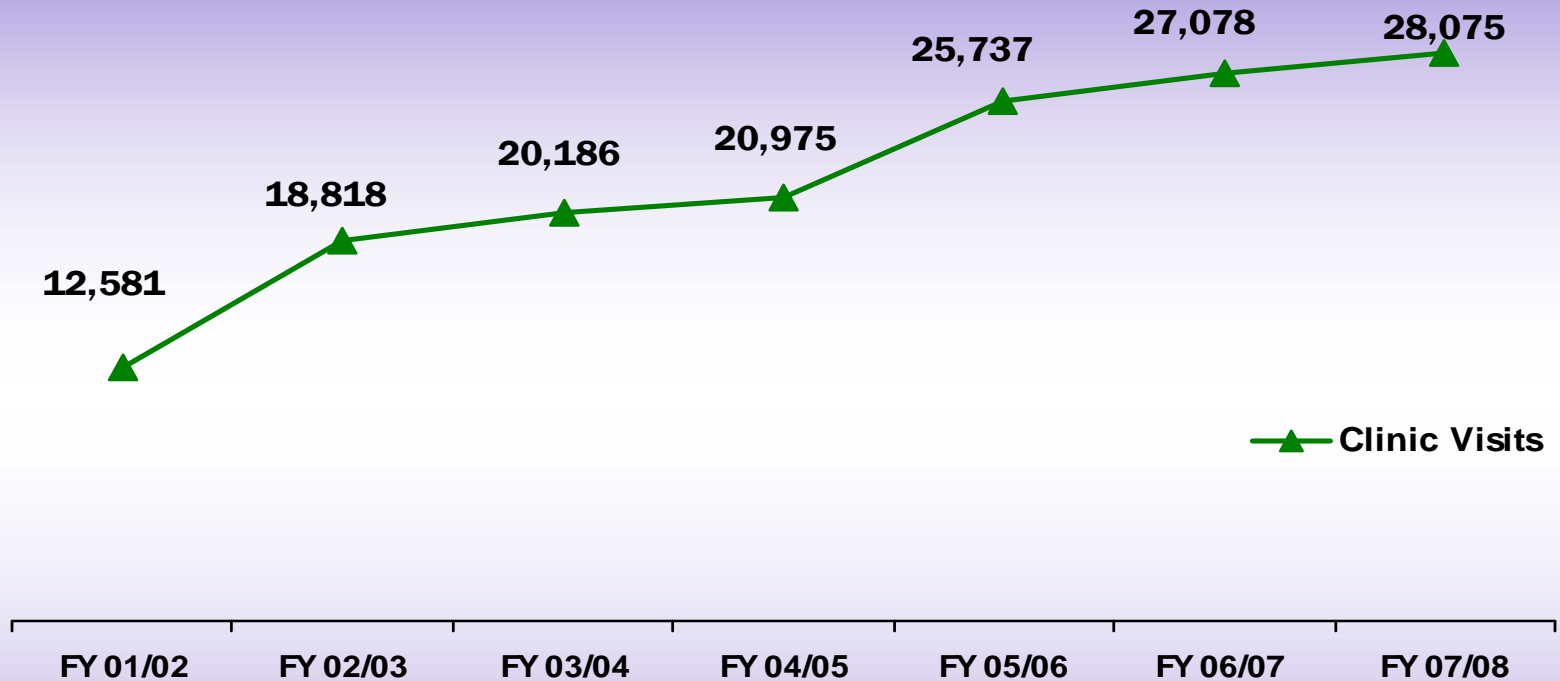
SBHC Client Trends



Number of Registered Clients

↑ 66%

SBHC Visit Trends



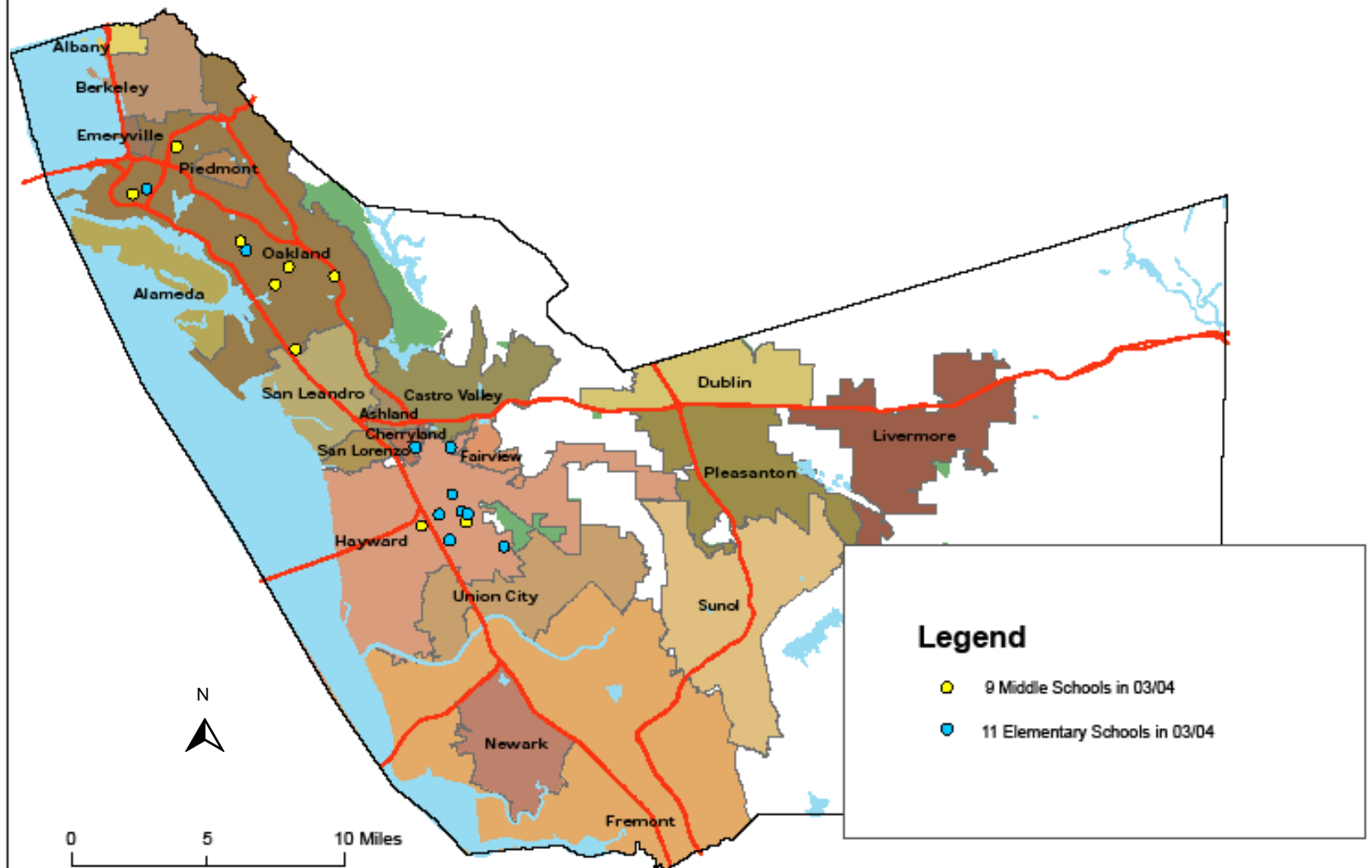
Number of Clinic Visits

↑ 123%

Number of Visits per Client

↑ 3.1 to 4.2

2003/2004 Alameda County Middle School & Elementary School Our Kids Sites*



2007/2008 Alameda County Middle School & Elementary School Our Kids Sites*

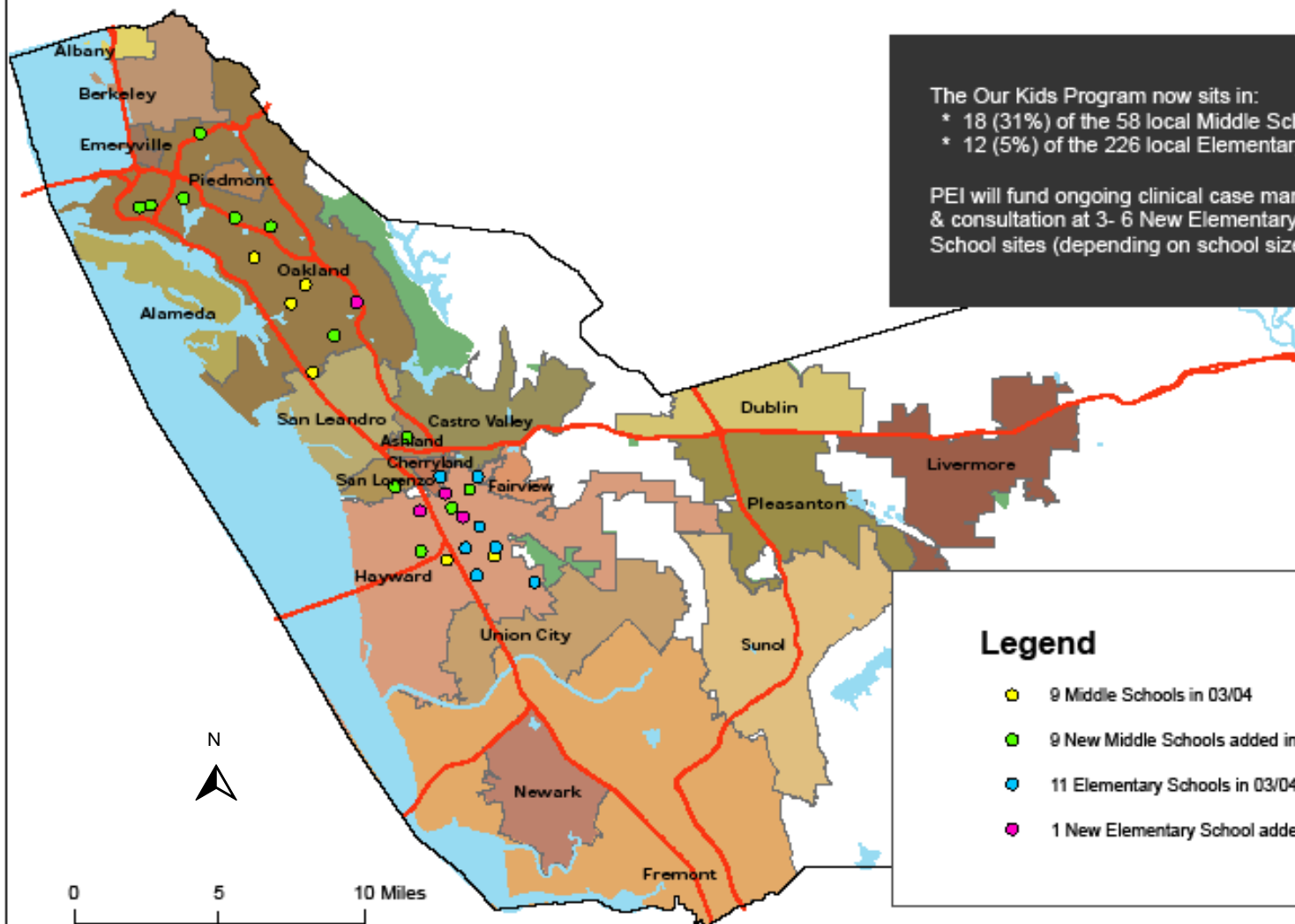
The Our Kids Program now sits in:

- * 18 (31%) of the 58 local Middle Schools.
- * 12 (5%) of the 226 local Elementary Schools.

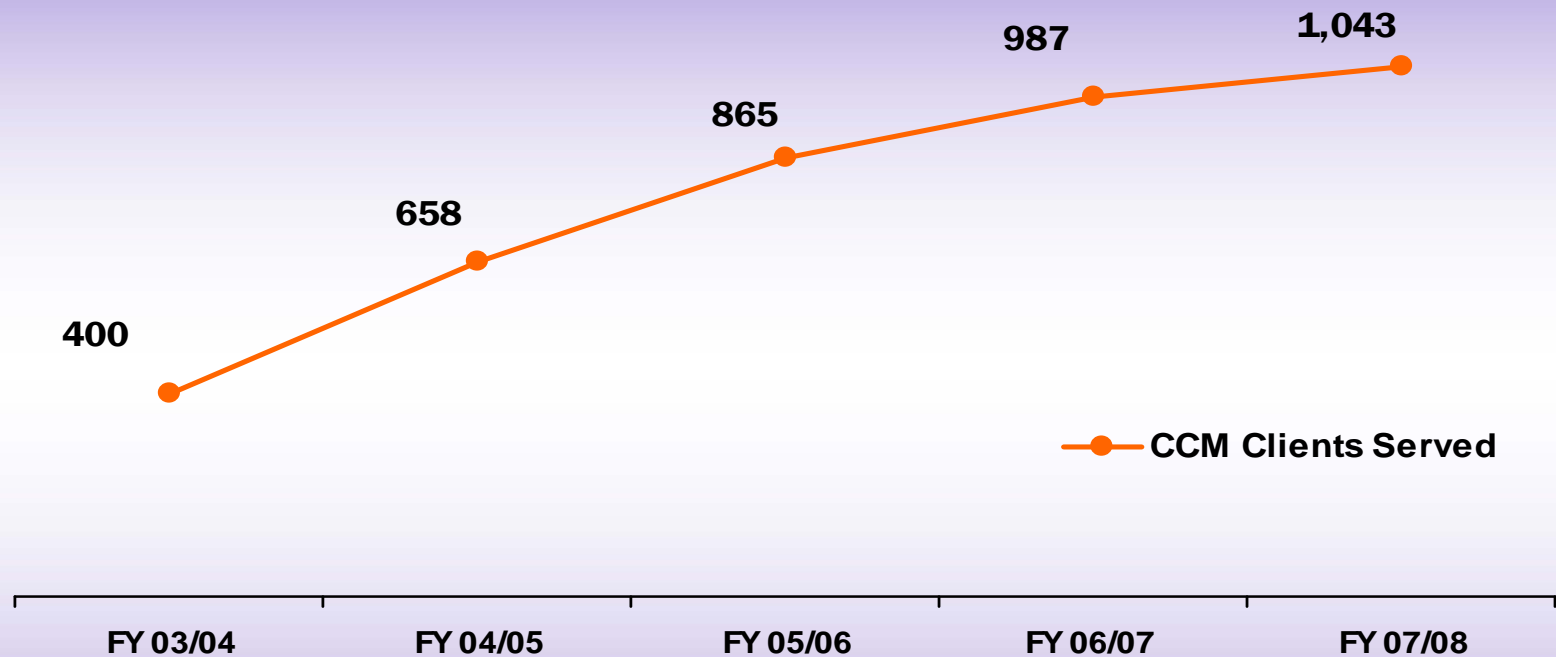
PEI will fund ongoing clinical case management & consultation at 3- 6 New Elementary and Middle School sites (depending on school size) .

Legend

- 9 Middle Schools in 03/04
- 9 New Middle Schools added in 07/08
- 11 Elementary Schools in 03/04
- 1 New Elementary School added in 07/08



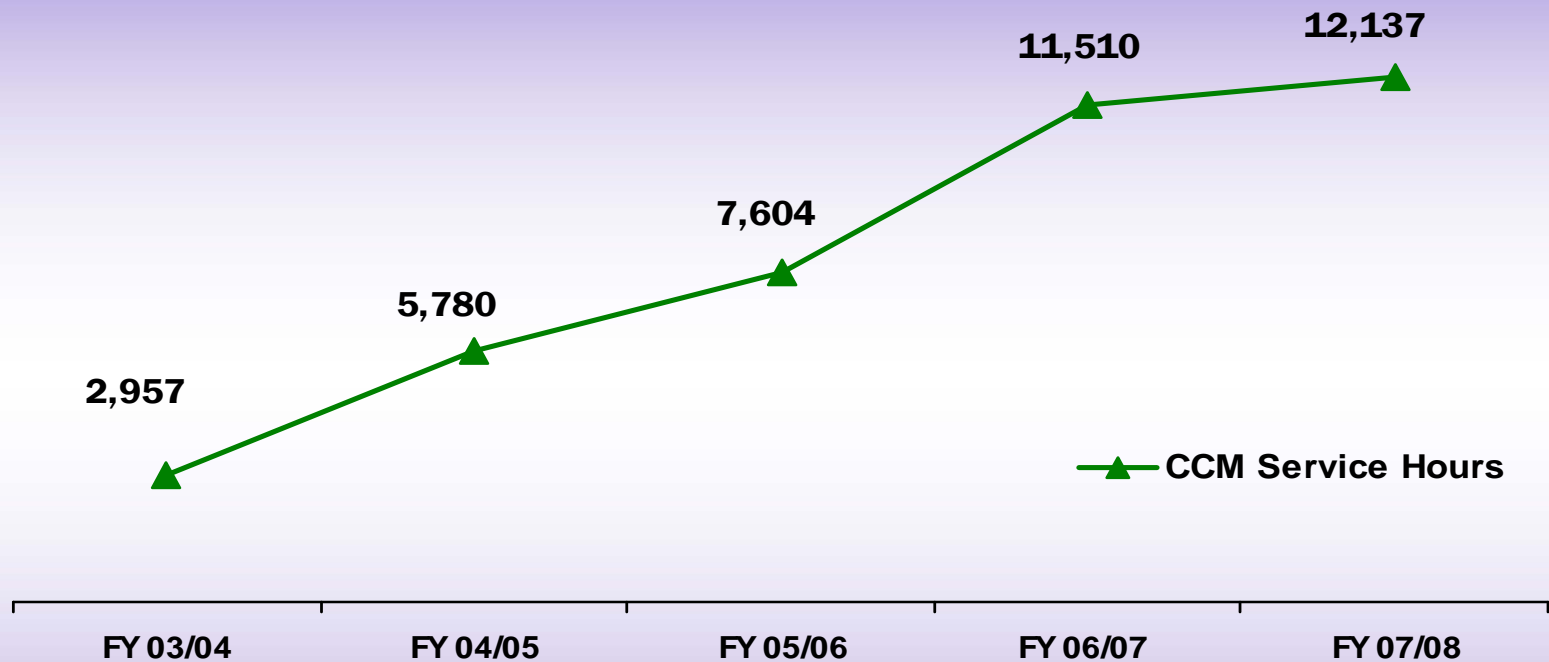
OUR KIDS Client Trends



Number of CCM Clients

↑ 161%

OUR KIDS Visit Trends



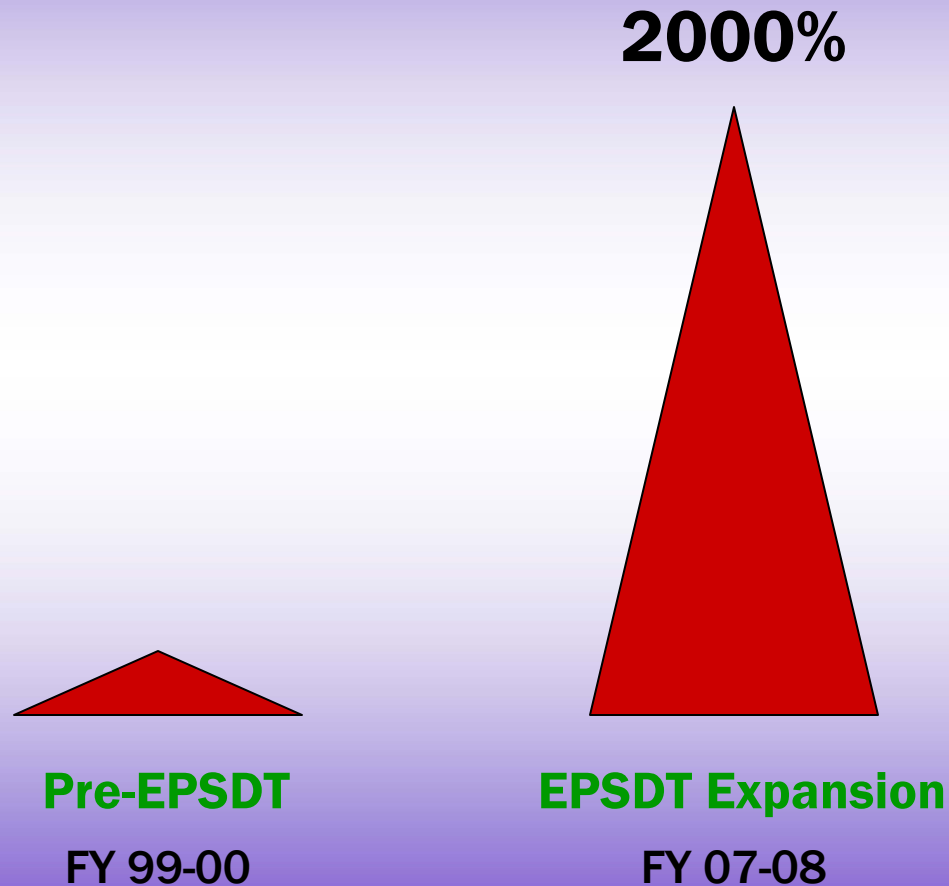
Number of CCM Hours

↑ 310%

Number of Hours per Client

↑ 7.4 to 11.6

Impact of EPSDT Medi-Cal Billable Services on School Mental Health



School Health Leveraging

- **\$2 million from County Measure A & TMSF for School Health Centers**
- **\$18 million for Oakland Universal Health from Atlantic/Kaiser**
- **\$450,000 from The California Endowment to launch Full Service Community Schools & Neighborhood Initiatives in San Lorenzo, Fremont, Tri-Valley, and Hayward.**

**MHSA-PEI
INTEGRATION
WITH
CHILDREN'S SOC**

Background to the MHSA

Purpose:

To transform the public mental health system by offering new and innovative services, especially to those that have a mental illness but have never received treatment.

Funding Streams:

- Community Services and Supports (CSS) – 2006
- **Prevention and Early Intervention (PEI) - 2008**
- Workforce Education and Training (WE&T) - 2008
- Capital and Technology
- Innovative Programs

PEI Planning Process

Four Phases of developing the PEI Plan:

- 1. Community Input**
- 2. Strategy Development**
- 3. Strategy Prioritization**
- 4. Plan Review**

PEI Integration With the Children's SOC

Stakeholders within the multiple phases of the Local PEI Planning Process requested that funds be used to expand upon successful local models:

- **Early Childhood Services**
- **School-Based Services**
- **Collaboration with approved Stigma and Discrimination Strategies**
- **Collaboration with Early Intervention at the onset of First Psychosis & SMI among Transition Age Youth**

Planning Process was robust and engaged a variety of stakeholders including families, youth, schools and service providers representing an array of cultural backgrounds and geographic regions of Alameda County.

Questions & Discussion